



ICFRE - TFRI NEWSLETTER

January-March, 2025 VOL:17



From the Director's Desk ::

I am pleased to mention that ICFRE-TFRI, Jabalpur, one of the nine regional institutes under the ICFRE provide strong research support for sustainable development of forests and forestry sectors in central India.

I take pride in sharing the 17th Volume (January-March, 2025) of ICFRE-TFRI Newsletter. showcasing significant research activities, events organized, participated and publications made during the period.

I hope this Newsletter will be helpful for researchers, different stakeholders, and policy makers concerned with forestry research.

Dr. H. S. Ginwal
Director, ICFRE-TFRI Jabalpur

Contents

Content	Page No.
Major Events	1
Scientist's Corner	2
Training & Capacity Building	8
Outreach Programmes	10
Important Visits	12
Celebration of Important Days	13
Staff News	14
Publications	14
Media Coverage	16
Knowledge Bequest of ICFRE-TFRI	17
Testing Facilities Offered	18
Services for to make your society green and healthy	19

Major Events

- ICFRE-Tropical Forest Research Institute (TFRI), Jabalpur, organized a five-days IFS refresher training program titled "Agroforestry and Farmer Livelihood: Problems and Solutions for Various States" from 3rd to 7th February 2025. Indian Forest Service officers from Uttarakhand, Haryana, Maharashtra, Odisha, Andaman and Karnataka attended the program. Dr. H.S. Ginwal, Director of ICFRE-TFRI, welcomed the participants and highlighted about the institute's history, objectives and appraised their contributions to forestry research. Mr. Jagdish Chandra, former PCCF (Haryana) & HoFF, served as the chief guest. He emphasized the historical relevance and importance of traditional agroforestry models. Dr. Nanita Berry, Training Coordinator, briefed the training objectives and course structure focused on enhancing farmer livelihoods through agroforestry. Dr. Shyam Vishwanath (former director of KFRRI), heads of divisions, scientists, and other TFRI officials graced the event.



- A MoU was signed between ICFRE-TFRI, Jabalpur, and State Forest Research and Training Institute (SFRTI), Raipur (CG) on 30th January 2025 to extend TFRI technologies among the Chhattisgarh forest officials focusing on training, capacity building and sustainable forest management.



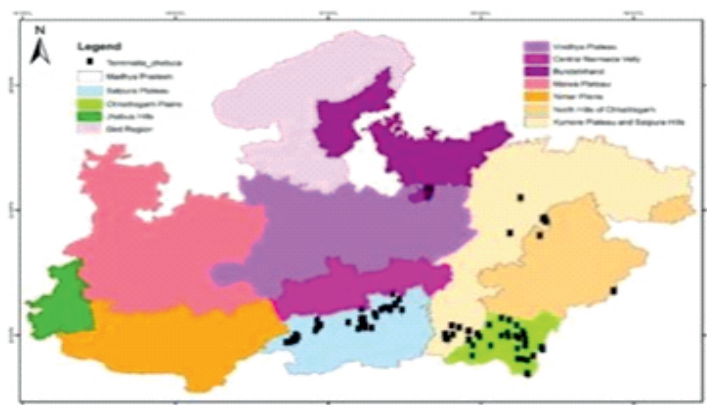


January-March, 2025 VOL:17

SCIENTIST'S CORNER

Identification of Prominent Populations of *Terminalia chebula* (Harra) and *Anogeissus latifolia* (Dhawda) in Madhya Pradesh Based on Active Chemical Constituents

- Prominent locations of *Terminalia chebula* (Harra) were identified and a distribution map of the species in Madhya Pradesh was prepared. The fruit samples were collected from 84 beats of 14 forest divisions. The content of gallic acid in collected fruit samples varied from 0.43 ± 0.02 to $6.22 \pm 0.25\%$. Average fruit size (length x width) varied from 493.31 to 1151.13 mm² for the samples collected from Dodramau beat of West Chhindwara and Bhimpur beat of North Betul forest divisions.



Dr. Hari Om Saxena
Scientist-E

Current status of nursery diseases and insect pests of important species in forest nurseries of Madhya Pradesh and their eco-friendly management.

- A periodic survey was conducted in selected Social Forestry (SF) nurseries across Madhya Pradesh, including: Rewa (Jayant Kunj Social Forestry Nursery), Panna (Vishramganj Forest Nursery), Shivpuri (Tuki Social Forestry Nursery), Guna (Cantt. Forest Nursery), Bhopal (Ahmadpur Social Forestry Nursery) and Sagar (Sijhora Social Forestry Nursery). Observations were recorded on pest damage affecting seedlings of important tree species such as Teak, Khamer, Arjun, Mahua, Chirol, Karanj, Aonla, Jamun, Neem, Bael, Sissoo, Siris, Sonpatha, Kusum, Bamboo and other species. Insect pests were identified based on their life stages, damage patterns and field symptoms.

Key Insect Pests Identified

- Teak:** Teak leaf skeletonizer (*Eutectona machaeralis*), whitefly (*Bemisia* spp.), leafhopper (*Amrasca* spp.).
- Bamboo:** *Hieroglyphus banian* (grasshopper), *Crypsitya coclesalis* (bamboo defoliator).
- Khamer:** Leaf miner (*Phyllocnistis amydropa*), leaf webber (*Paratalanta* spp.), Tingis beesoni.
- Karanj:** Skipper (*Hasora chromus*), eriophyid mite (*Aceria pongamiae*) causing finger galls.
- Neem:** Tea mosquito bug (*Helopeltis antonii*), red spider mite (*Tetranychus urticae*).
- Arjun:** Defoliator (*Selepa celtis*), gall-making psyllid (*Trioza fletcheri*).
- Mahua:** Defoliators (*Achaea janata*, *Bombotelia* spp., *Metanastria hyrtaca*), leaf miner (*Acrocercops euthycolona*).
- Sissoo:** Ash weevil (*Myloccerus* spp.), defoliator (*Plecoptera reflexa*), leaf twisting weevil (*Apoderus* spp.).
- Aonla:** Gall-making insect (*Betousa stylophora*), mealybug (*Nipaecoccus* spp.).
- Jamun:** Defoliator (*Carea subtilis*).
- Bael:** Defoliator (*Papilio* sp.).
- Haldu:** Defoliator (*Dirades theclata*).
- Chirol:** Green leafhoppers (*Nephotettix* spp., *Amrasca* spp.).
- Siris, Sonpatha, Kusum:** Unidentified defoliator pests.
- A periodic survey in various nursery of Madhya Pradesh (Bhopal), followed the molecular identification and confirmed the pathogens like *Colletotrichum gloeosporioides* and *Alternaria tenuissima*. The sequences were submitted to NCBI Gen Bank (NCBI sequence ID PP887685, PP887686) for *Colletotrichum gloeosporioides* and *Alternaria tenuissima*, respectively

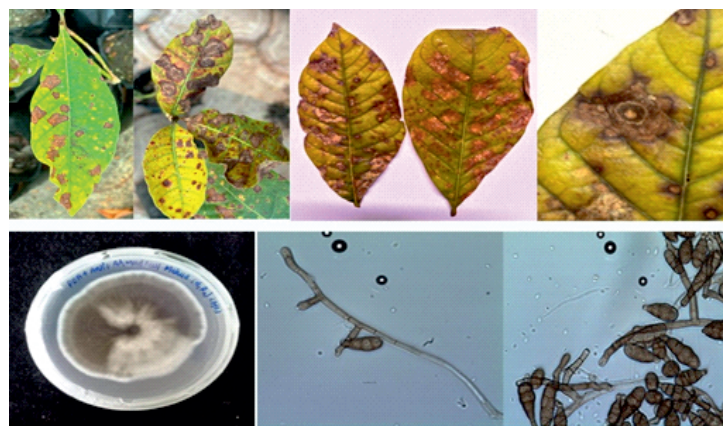


Fig. (i-vi) Isolation and purification of fungal pathogens derived from different nurseries





January-March, 2025 VOL:17

NCBI Sequence ID	SL.NO.	NCBI Sequence ID
Mahua Pathogen: SUB14509555 Kshipra vihar ACCESSION PP887685 AUTHORS: Darshan, K., Mishra, S.N., Fatima Shirin and Charishma,K.	1	<i>Colletotrichum gloeosporioides</i> (LOCUS PP887685 575 bp DNA linear PLN 12-JUN-2024)
Mahua Pathogen: SUB14509555 Ahmadpur_Mahua_B08 ACCESSION PP887686 AUTHORS: Darshan, K., Mishra,S.N., Fatima Shirin and Charishma,K.	2	<i>Alternaria tenuissima</i> (LOCUS PP887686 569 bp DNA linear PLN 12-JUN-2024)

Dr. S.N. Mishra
 Scientist-D
Dr. C. Mohan
 Scientist-C
Dr. Darshan K.
 Scientist-C

NEW PROJECT SANCTIONED

S.NO.	Name Of Project	Name Of PI	Amount Sanction (Rs. IN Lakh)
1	Studies on the Conservation Strategies of <i>Adansonia digitata</i>	Ms. Komal Rani	9.00
2	Establishment and evaluation of seed source trial of <i>Santalum album</i> in Central India.	Dr. Divya Prakash	8.00
3	Exploration of Kairomone Signals for the Ecofriendly Management of Defoliator Pests in Teak Nurseries and Plantations.	Dr. Nidheesh T.D.	13.0
4	Development of passport data for comparative morpho chemometrics to assess purity/ adulteration of forest origin gums and resins.	Mr. Ajit Kumar Maurya	8.0



January-March, 2025 VOL:17

Development of value chain for bamboos for mass multiplication, popularization in farmers' field and industrial linkage in central India.

Mass propagation and Quality Planting Material (QPM) production

- Propagation of elite bamboo clumps from the TFRI Germplasm Bank was achieved through refined macropagation and micropropagation techniques. For *Bambusa tulda*, protocols were standardized for in vitro bud initiation (MS medium with 3 mg/L BA), shoot multiplication (2.5 mg/L BA), and rooting (10 mg/L coumarin). For *Pseudoxytenanthera stocksii*, shoot cultures were maintained on MS medium enriched with 4 mg/L BA and 0.25 mg/L IAA, and rooting was induced with 0.5 mg/L NAA. Rooting success was also achieved using culm and culm branch cuttings with species-specific hormone treatments, including IBA and NAA. For instance, *B. vulgaris* var. *green* and *B. nutans* responded to 200 ppm IBA, while *D. strictus* and *P. stocksii* required higher concentrations of 1500 ppm IBA and 2000 ppm NAA, respectively. *B. balcooa* and *B. bambos* responded well to cavity methods with 50 ppm IBA and 50 ppm boric acid, respectively.

Field evaluation and introduction of bamboo species in Central India

- To popularize bamboo cultivation, field trials were established across 10 hectares at Kundam and Jabalpur, Madhya Pradesh, involving six bamboo species: *Bambusa tulda*, *B. bambos*, *B. nutans*, *B. vulgaris* var. *green*, *B. balcooa*, and *Dendrocalamus strictus*. After three years, *B. nutans* (DM-CL-9) showed the highest culm heights (5.68 m at Jabalpur and 3.35 m at Kundam). The highest culm numbers were recorded in *B. tulda* (NW-CL-2, 5.67 culms) and *D. strictus* (BAL-CL-4, 4.49 culms), and significant culm diameters were achieved by *B. bambos* (MAN-CL-2, 3.79 cm) and *B. nutans* (DM-CL-9, 6.79 cm).

Industrial linkage and clonal fidelity testing

- A multipartite collaboration was formalized between TFRI, Jabalpur; Orient Paper Mill, Amlai; and local farmers to establish a bamboo value chain in Central India. Farmers were selected in consultation with the industry partner, and plantations were established in the villages of Naugaja, Chingrola, Bharhut, and Kacharwar in Umari district, Madhya Pradesh. Clonal fidelity of tissue-culture derived plants was assessed using ISSR markers (UBC 836 and UBC 840). DNA banding patterns from progenies of *B. tulda*, *B. nutans*, *B. balcooa*, and *P. stocksii* matched



Fig.1 Species trial of bamboos at Jabalpur



Fig. 2 (i-iii). Micropropagation of *Bambusa tulda*: Bud initiation; *In vitro* shoot multiplication; rooted plantlet



Fig.3 (i-iii). Micropropagation of *Pseudoxytenanthera stocksii*: Bud initiation; *In vitro* shoot multiplication; rooted plantlet

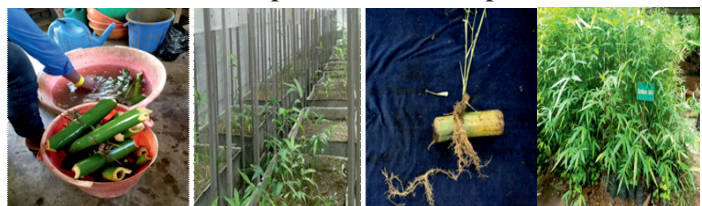


Fig. 4 (i-iv) Treatment of cuttings, sprouting, rooted cuttings and plants of *Bambusa tulda*

**Dr. Fatima Shirin
Scientist-G**





January-March, 2025 VOL:17

• Promotion of bamboo based agroforestry system for economic upliftment and livelihood security of farmers in Madhya Pradesh.

- Bamboo based agroforestry model was successfully established in the farmer's field at Konikala, Vasan, Doni, Patan, Deoribasania, Sohad village, Jabalpur. Imparted two on site trainings to the farmers at Ranga Farms, Devri-Basaniya village, Jabalpur on management of bamboo culms. The girth and height of culms ranged between 30.2 to 35.5 cm and 12 to 15 meters, respectively under four-year old bamboo based agroforestry system. Bamboo growers get additional revenue by selling bamboo branches for stacking of tender vegetables like tomato and support climber beans.



Maintenance and recording of growth data of four-year old culms of bamboo

Dr. Nanita Berry
Scientist-F

Introduction and evaluation of *Melia dubia* Cav. in Central India.

- Filed evaluation trail of *Melia dubia* genotypes were established at Chhindwara, Morena (MP), Durg (CG) & Nagpur, Amravati (Maharashtra). At the age of three years, the genotypes 261, 235, 268, 2035, 2068, 2067, 2076 and 267 demonstrated superior performance under field conditions, exhibiting plant height 9.60m, 9.20m, 8.20m, 7.25m, 7.60m, 7.20m, 6.40m and 6.40 m and collar diameter (41.20 cm, 36.00 cm, 37.20 cm, 54.25 cm, 51.20cm, 48.20 cm, 47.80cm and 46.20 cm) respectively.



A view of *Melia dubia* trials

Shri N.D. Khobragade
Scientist-E



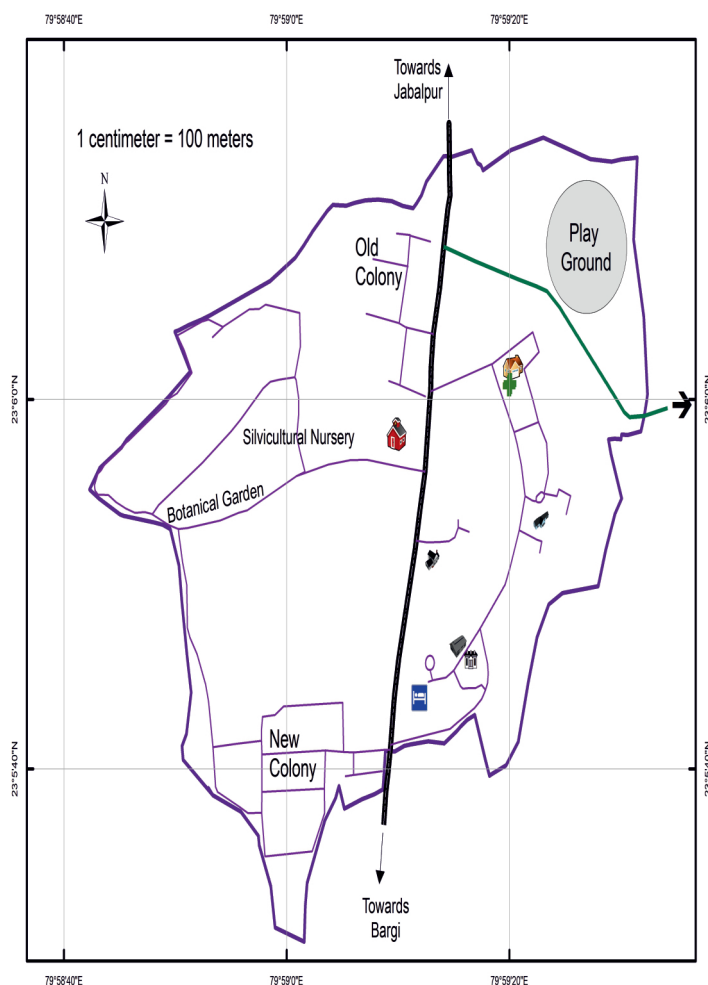


January-March, 2025 VOL:17

Geo-tagging of valuable trees diversity of TFRI

Adansonia digitata

Distribution Map in ICFRE-TFRI Jabalpur Campus



Legend

Girth (cm) Landmark

+ > 200

Administrative Building

Director Bungalow

Kendriya Vidyalay

Neemkheda

Plant Protection Division

Rest House

Scholar Hostel

Scientist Hostel

TFRI boundary

Play Ground

Roads

Internal Roads

Neemkheda Road

Samadhi Road

Botanical Name: *Adansonia digitata*

Family name : Malvaceae

Common name : Baobab

Habit: Deciduous tree



Botanical description:

Native to Africa, the baobab is a remarkable tree with a massive, water-storing trunk. It sheds leaves in the dry season and blooms at its end with large, night-blooming white flowers pollinated by bats. Its gray, gourdlike fruits hang down, resembling dead rats by their tails.

Use: Suitable for use as a bonsai. The leaves, roots, flowers, fruit pulp, and seeds are all edible and have various traditional medicinal uses. The dried pulp is sold around the world in powdered form. The bark fibers can be harvested and used to make ropes, mats, nets, and fabric.

There are 5 trees in the ICFRE-TFRI campus.

Shri Dheeraj Gupta
Scientist-D
FE&CC DIVISION

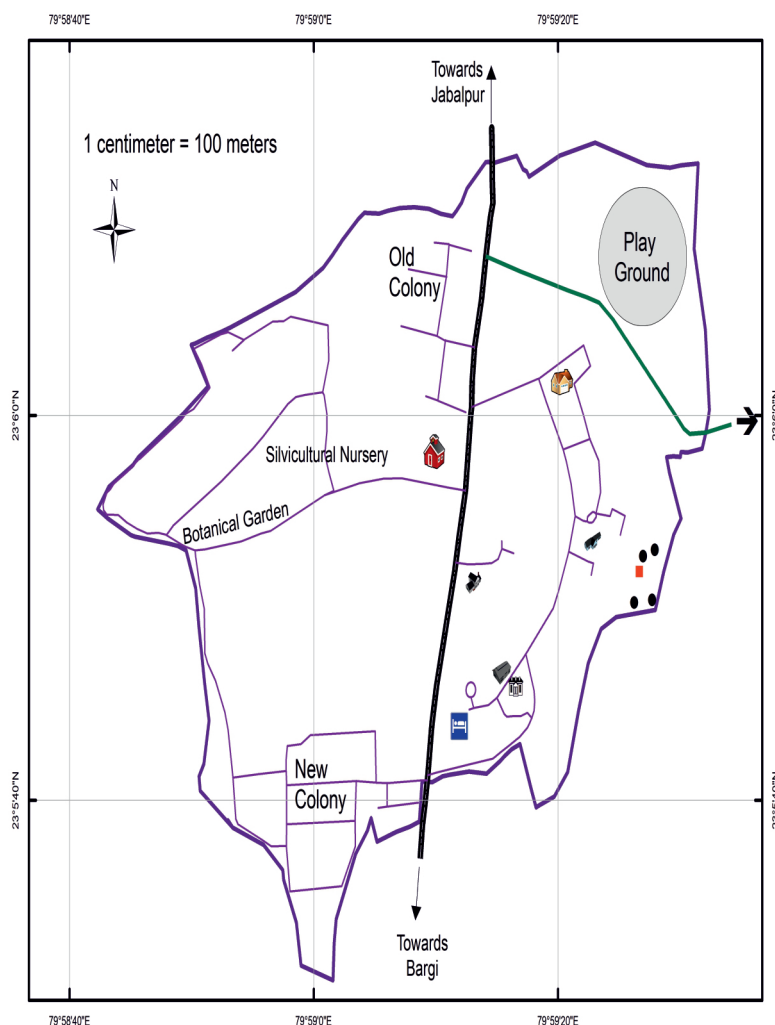




January-March, 2025 VOL:17

Adina cordifolia

Distribution Map in ICFRE-TFRI Jabalpur Campus



Legend

Girth (cm)	Landmark	
● ≤50	Administrative Building	TFRI boundary
■ 50 - 100	Director Bungalow	Play Ground
	Kendriya Vidyalay	Roads
	Neemkheda	Internal Roads
	Plant Protection Division	Neemkheda Road
	Rest House	Samadhi Road
	Scholar Hostel	
	Scientist Hostel	

Botanical Name: *Adina cordifolia*

Family : *Rubiaceae* (Coffee family)

Common name : Haldu , Yellow Teak

Habit: Moist deciduous forests



Botanical description: Yellow Teak is a tall deciduous tree with broad, heart-shaped leaves. Its small yellow flowers, often tinged with pink, bloom in spherical clusters 2–3 cm wide. Flowering occurs from June to August, creating a striking display during the monsoon season. The tree can grow over 20 metres high.

Use: Leaves and bark are used for cholera, cold cough, fever, headache, scars and urinary complaints. Paste of stem bark and leaves are used for curing deep wounds, jaundice, stomachache. Wood is valued for making small items.

There are 16 trees in the ICFRE-TFRI campus.

Shri Dheeraj Gupta
Scientist-D
FE&CC DIVISION





January-March, 2025 VOL:17

Training and Capacity Building

Training For Gujarat Forest Department

- The third and fourth one-week trainings on "High Quality Plant Production and Livelihood Security through Agroforestry" were held from 8th–13th January and 20th–24th January 2025 at ICFRE-TFRI, Jabalpur, for 20 officials of the Gujarat Forest Department. Dr. H. S. Ginwal, Director, ICFRE-TFRI emphasized promoting afforestation outside forest areas using quality planting material and industry-oriented agroforestry models, Dr. Nanita Berry, Scientist-F and Head, Extension Division, coordinated the training and briefed the participants about the training program.



One week training on "Plant Biotechnology" was organized by ICFRE-TFRI, Jabalpur from 13th-17th January, 2025 for B.Sc. students of Government Model Science College Jabalpur.



- A five day training program on "Instrumentation" was held from 20th-24th, January 2025; Dr. Hariom Saxena, training coordinator, briefed about the use of instruments in research during the inaugural session. Dr. H.S. Ginwal, Director emphasized the importance of new technologies and instruments in the field of research, explaining how these new techniques and instruments can make research more efficient and accurate.



- A five-day training program on "Quality Planting Material Production & Agroforestry for Livelihood Security" was held from 10th–14th February 2025 at ICFRE-TFRI, Jabalpur, for Gujarat Forest Department staff. Dr. H.S. Ginwal, Director, ICFRE - TFRI, Jabalpur inaugurated the program focused on high-quality planting material, species selection, timely seed collection, and agroforestry models to boost income and land productivity. Dr. Nanita Berry coordinator briefed the outline of program and highlighted the importance of the forest conservation, sustainable management, and enhancing rural livelihoods through agroforestry practices.





January-March, 2025 VOL:17

Training For Stockholder of Madhya Pradesh

- Training programs were organized from 19th-22nd March, 2025 for various stakeholders on "Sustainable harvesting and conservation of medicinal plants/forest produce for livelihood security" in 9 different locations of Madhya Pradesh i.e. Balaghat, Bichiya, Haidargarh, Seoni, Mandla, Vidisha, Niwas, Sagar and Pauanala Forest. These programs were organized by Dr. Hari Om Saxena, Scientist-E.



Training For Maharashtra Forest Deployment

- A three-days training program on "Plant Tissue Culture for the Production of Quality Planting Material of Bamboos" was organized by ICFRE-TFRI, Jabalpur, from 19th-21st February 2025 for forest officers, assistant conservators and range officers from Maharashtra. Dr. H.S. Ginwal, Director, ICFRE-TFRI, Inaugurated the program and emphasized bamboo's role in afforestation, ecological conservation, livelihood enhancement and highlighted tissue culture as a key method to improve the supply of quality bamboo planting material for large-scale plantations. Training coordinator, Dr. Fatima Shirin outlined the program's focus on modern propagation techniques, including micropropagation, media preparation, infection control, hardening, and field establishment.



- The ICFRE-Tropical Forest Research Institute, Jabalpur, conducted a one-day hybrid training workshop on 24th, March 2025, at Nagpur for Maharashtra State Forest Department officials on "Use of Soil Health Cards for Promoting Soil Test-Based Nutrient Management Practices". Smt. Shomita Biswas (PCCF & HOFF, MHSFD) addressed the event. Dr. H.S. Ginwal highlighted the institute's research initiatives.

- Experts, including Dr. Avinash Jain, Dr. V.P. Panwar, and Dr. Jangam Deepika, delivered lectures. Over 100 forest officers participated in the training.



- A three-day training program on "Agroforestry, Management and Bamboo Seed Technology" was organized at ICFRE-TFRI, Jabalpur, from 10th-12th March, 2025 for Maharashtra forest officials, sponsored by the Maharashtra Forest Department. During the inaugural session Dr. H.S. Ginwal, Director, ICFRE-TFRI, addressed the participants and emphasized the use of bamboo for afforestation, ecological conservation, and livelihood enhancement, along with the importance of expanding forest cover in agricultural landscapes. Dr. Nanita Berry, training coordinator, highlighted the objective of the training.



- A three-days training program on "Bamboo Propagation and Plantation Management" was organized from 4th- 6th March, 2025 at ICFRE-TFRI, Jabalpur, for Maharashtra's DFOs, ACFs, and RFOs. The training was Inaugurated by Dr. H. S. Ginwal, Director, ICFRE-TFRI, Jabalpur. He emphasized bamboo's importance and encouraged for creating bamboo rhizome banks. Dr. Fatima Shirin, the program coordinator, highlighted the goal of training to train officials with modern bamboo propagation techniques to support sustainable production and enhance the quality of bamboo resources. Training was funded by the Maharashtra Forest Department.





January-March, 2025 VOL:17



Training For IFS Officers

- A three-day training workshop on "Preparation of Ecosystem and Health Card " for Indian Forest Service officers was held at ICFRE-TFRI, Jabalpur, from 28th–30th January 2025, with participation from officials across various states. Dr. H.S.Ginwal, Director, ICFRE-TFRI, inaugurated the workshop. Dr. Avinash Jain Workshop coordinator, addressed ecosystem issues, land degradation, and the need for awareness and joint conservation efforts. Dr. K. Ravichandran, Director, IIFM Bhopal, spoke on ecosystem problems, their diagnosis, management, and the importance of policy adherence and public participation.



- ICFRE-Tropical Forest Research Institute, Jabalpur, Madhya Pradesh, participated in a one-day exhibition during the Mega Health Checkup and Elite Solution Camp, organized by the Vindhya Sanskritik Manch, Jabalpur. The program was inaugurated on 19th January, 2025 by the Hon'ble Shri Rajendra Prasad Shukla, Deputy Chief Minister, and Shri Kailash Vijay Varghiya, Minister for Urban Development and Housing Affairs.
- The ministers visited the TFRI stall, interacted with the officials and appreciated the institute's tribal livelihood programs including lac cultivation, hydroponics for MAPS, and agroforestry models.



- ICFRE-Tropical Forest Research Institute (TFRI), Jabalpur, participated in the "Nature Mahakumbh (प्रकृति महाकुंभ)" held in Prayagraj on 24th January, 2025. The event was organized by the ICFRE. Ecological Restoration Center, Prayagraj, in collaboration with CSIR-Central Institute of Medicinal and Aromatic Plants (CIMAP), Lucknow, and featured a one-day training and plant distribution program. Dr. H.S. Ginwal, Director, ICFRE-TFRI, Jabalpur was invited as the Chief Guest and addressed the farmer highlighting the importance of integrating tree species and medicinal plants in sustainable farming. The program showcased technologies –developed by different institutes under the ICFRE and posters on the improved variety of Vacha, non destructive harvesting techniques, and aquatic cultivation of medicinal plants were displayed and well appreciated by the farming community.

OUTREACH PROGRAMMES

- Thirty-five students and six faculty members from Rani Durgavati Government College of Paraswara, Balaghat, visited ICFRE-TFRI, Jabalpur on 16th January, 2025. Students visited Forest Ecology Division, the Insectary of the Forest Protection Division, Hydroponics Lab of the Silviculture Division, and Library of the institute.





January-March, 2025 VOL:17



- ICFRE-Tropical Forest Research Institute, Jabalpur organized a two-day training program on “Research Methodology” from 17th–18th February 2025 for officers of the Research Branch, Maharashtra Forest Department at Chandrapur Forest Academy. The program was coordinated by Dr. Nanita Berry.



- ICFRE-TFRI, Jabalpur participated in Kisan Mela -2025 at ICAR-Directorate of Weed Research, Jabalpur on 18th February, 2025 and displayed technologies developed by TFRI.



- ICFRE-Tropical Forest Research Institute, Jabalpur organized an exhibition on Forest based products developed by Van-Dhan Samiti, lakhnadon and NABARD, Kundam on 21st March, 2025 at TFRI, Jabalpur.



- ICFRE-Tropical Forest Research Institute, Jabalpur, Madhya Pradesh participated in the Divisional Millets Food Festival and Agricultural Fair held from 29th to 30th March 2025, along with 50 institutions. The fair aimed to promote millets, enhance farmer income through processing, and facilitate linkages among farmers, traders, and consumers. The institute showcased agriculture and forestry models based on millets and different technologies of ICFRE-TFRI were displayed. On the first day, over 1000 farmers and scientists visited the stalls.





January-March, 2025 VOL:17

NSS Camp at ICFRE-TFRI

- The seven-day special camp of the National Service Scheme was organized by St. Aloysius College, Sadar, Jabalpur. Madhya Pradesh, on the premises of the ICFRE-Tropical Forest Research Institute, Jabalpur.
- On this occasion, coordinator of the program Dr. Akhilesh Pathak, outlined the structure of the camp and the Director ICFRE-TFRI encouraged the participants and urged them to raise awareness among the residents around the campus through cleanliness drives, drug de-addiction rallies, and street plays.



- Dr. Kaushal Tripathi, Mr. Anil Vishwakarma, Mr. Manish Sapkal, and Mr. Durgesh Kumar Thakur participated in Joint Regional Language Conference for the Central, Western, and Northern regions at Jaipur, Rajasthan, on 17th February 2025. The conference was chaired by the Hon'ble Minister of State for Home Affairs, Mr. Nityanand Rai, with Mr. Bhajanlal Sharma, the Chief Minister of Rajasthan, serving as the Chief Guest
- The main objective of the conference was to emphasize linguistic diversity, promote social harmony and encourage the use of Hindi in government work across India. During the brain storming session, invited academicians highlighted the need to accelerate the adoption of Hindi in government work, presenting the mantras "Triple K" (Pen, Tongue, Computer) and "Triple P" (Training. Practice, Encouragement).



- Shri Shankar Sharma, Assistant Director (Official Language), Forest Research Institute, Dehradun, conducted a workshop on the Official Language policy of the Union Government and provided guidance on filling and submitting the Rajbhasha Orientation Observation Questionnaire. He also delivered a lecture on the use of the 'Kanthasth' software to officials at ICFRE-Tropical Forest Research Institute, Jabalpur, on 21st February 2025.

Important Visits

- Sixteen probationary Indian Forest Service officers visited the ICFRE-Tropical Forest Research Institute, Jabalpur, for a one-day program. Smt. Neelu Singh. Scientist-G and Group Coordinator (Research), presented detailed information about the institute's history, objectives, and its work in the field of forestry research.
- On this occasion, Dr. H.S Ginwal, Director, ICFRE-TFRI Jabalpur, shared insights about the institute and interacted with the Official





January-March, 2025 VOL:17

Establishment of Van Vigyan Kendra at Indore

- Dr. Nanita Berry, Head, Forest Extension division along with her team visited Van Vigyan Kendra, Indore and interacted with CCF and DFO, Indore circle and presented a brief about the activities to be done at VVK, Indore,



Dr. Nanita Berry, Head, FE division interacted with CCF and DFO, Indore



Visit of the site under VVK, Indore

Celebration Important Days

International Forest Day

- International Forest Day was celebrated on 21st March, 2025 at the ICFRE-Tropical Forest Research Institute Jabalpur, On this occasion, two documentary films were presented, covering the topics "Wildlife and Tribals" and "Extra Income through Mushroom Cultivation." Additionally, an exhibition of "Forest Products" created by the Forest Committee, Lakhnadon, and NABARD was also set up, aimed at raising awareness among children about the importance of forests. Dr. H. S. Ginwal, Director, ICFRE-TFRI, Jabalpur, briefed about the significance of forests and the means of livelihood they provide. Students from PM Shri Central School TFRI and PM Shri Government School, Salivada, Jabalpur, along with Mr. Gopal Singh, Assistant Conservator of Forests, Lakhnadon was also present on this occasion. Later, all the students visited the botanical garden, sandalwood agroforestry, and museum at the institute.





January-March, 2025 VOL:17

STAFF NEWS

New Joining

S.No.	Name of Employee	Date of joining	POST	Division/Section
1	Shri Laxmi Narayan Meena	24.02.2025 (F.N.)	LDC	Account Section
2	Shri Sunil Kumar	27.02.2025 LDC	LDC	Account Section
3	Shri Shubham Pandey	27.02.2025 (F.N.)	LDC	Vehicle Section and Store and Purchase Section
4	Ms. Sonali	27.02.2025 (F.N.)	LDC	Genetics and Tree Improvement Division
5	Shri Abhijeet Pratap Singh	27.02.2025 (F.N.)	LDC	Establishment Section
6	Shri Rakesh	27.02.2025 (F.N.)	LDC	ICFRE-Skill Development Centre (SDC), Chhindwara

PUBLICATION

Research Papers

Pusam, R., Asaiya, A.J.K. and Raj, D. (2025). Cultivation of Oyster mushroom (*Pleurotus ostreatus*) using Agriculture substrate. *Journal of Emerging Technologies and innovative Research (JETIR)*, 12 (3):674-685.

Tripathi, K. Mishra, M., Yadav, J., Kumar, G., Shankar, R., Tiwari, P., Shirin, F. and Shukla, B. (2024), Cytological and Phenological Variability in *Dalbergia latifolia* Roxb: A Vulnerable Tree Species. *Silvae Genetica*, 73: 190-200.

Shirin, F., Saudagar, I. A., Mohammad, N., Soni, R., Tripathi, K. and Prakash, D. (2025) Assessment of the Impact of Pre-Sowing Treatments on Variations in Seed Germination Dynamics and the initial Growth of Seedlings in *Sterculia urens*. *Indian Forester*, 151(3):244-254.



**January-March, 2025 VOL:17**

Vishwakarma, J., Asaiya, A.J.K. and Raj, D. (2025). Isolation of Endophytic Fungi From *Azadiracta Indica* and Their Antagonistic Activity. *International Journal of Research and Analytical Reviews (URAR)*, 12 (1): 736-744

Nidheesh, T.D., Jayanthi, P.D.K., Jagadish, K.S. and Shivanna, B. (2025) Enhancing biological control: Unraveling the impact of salicylic acid on maize volatile emissions and *Spodoptera frugiperda* - parasitoid interactions Hexapoda, *Insecta Indica*, 32(1): 1–10. <https://doi.org/10.55446/hexa.2025.49>.

Dahayat, A., Mohammad, N., Yadav, R. S., Agrahari, H., Pardhi, Y., Shirin, F. and Miskini, B. (2025). Enhancing conservation and genetic resource management through cross-transferability exploration and optimization of DNA extraction protocol for *Buchanania cochinchinensis* (Lour.) M. R. Almeida. *Vegetos*. <https://doi.org/10.1007/s42535-025-01176-3>.

Rohilla, S., Rana, V., Ginwal, H.S., Chaudhary, U., Prajapati, N., Malik, S. and Barthwal, S., 2025 Age and height as determinants of the chemical properties of two morphometrically superior genotypes of *Dendrocalamus strictus* (Roxb.) Nees: Prospects for advances in industrial applications. *Advances in Bamboo Science* 11, p.100156. doi: 10.1016/j.bamboo.2025.100156.

Parihar, S., Saxena, H. O., Pawar, G., and Ginwal, H. S. (2025) Validated high performance thin layer chromatographic method for simultaneous quantification of betulinic acid, β -sitosterol and lupeol in fruits, leaves, root bark and stem bark of *Dillenia indica* Linn. *Acta Chromatographica* 37(2), 183-193

Book Chapters

Darshan, K., Tailor, A., Rani, K., Chittaragi, A., Loona, D., Santhoshini, E., Nigam, S. and Shreedeevasena, S. (2025). Biotechnological Approaches for Combating Tree Diseases to Enhance the Forest Ecosystem Sustainability. In: Kalia, R.K., Pathak, R. (eds) *Tree Biology and Biotechnology*. Springer, Singapore. Page no-261-285. https://doi.org/10.1007/978-981-96-0002-1_16.

Tripathi, K et al., (2025). Chemical constituents and TLC profiling of flowers of *Psydrax dicoccos* Gaertn. Plant and secondary metabolites, Vol-6, ICBN no ISBN: 978-81-984754-0-4.

M. Rajkumar (2025). Forest management - A brief review of the traditional methods and current trends Published book chapter in the book titled 'Advanced Geospatial and Ground Based Techniques in Forest Monitoring' Elsevier. eds. Kumar, P., Srivastava, P.K., Khan, M. L., Arunachalam, A., Roy, P. S. and Kumar K. 1st Edition, July 2025, Paperback, ISBN: 978044318949

Mishra, R.K., Mishra, D. and Agarwal, R. (2025). Robotics and Autonomous Systems. Innovations, Challenges, and Future Prospects, ISBN (eBook) 9783389117217 ISBN (Book) 9783389117224, GRIN Publishing GmbH, Trappentreustr. 1, 80339 Munich, Germany. Catalog Number V1563344, 37 pp.

Popular Articles

Komal Rani and Naseer Mohammad (2025). RNAi: A revolutionary approach to combat insect infestation in forest trees. *Van Sangyan*, 12 (1):39-45.

एस.सी. बिस्वास, निकिताराय, नरेन्द्र मिश्रा एवं नीलू सिंह (2025) अगरबत्ती उद्योग के लिए जिगत का वैकल्पिक स्रोत, *वनसंज्ञान*, 12 (1):15-19.

Mohan, C. (2025). Lac farming: An alternative income source for farmers. *Van Sangyan*, 12 (2):26-30.

Saikat Banerjee, Avinash Jain, M. Rajkumar and K. S. Sengar (2024). Ecosystem and ecosystem services, *Van Sangyan* 11(12):59-67.



वन विभाग के अधिकारियों को मिला पौधा रोपण का प्रशिक्षण



जयलपुर। उष्णकटिबंधीय वन अनुसंधान संस्थान में गुजरात वन विभाग द्वारा प्रयोजित, गुजरात वन विभाग के अधिकारियों एवं कर्मचारियों के लिए उच्च गुणवत्ता पौध उत्पादन एवं कृषिज्ञान की द्वारा अजीविका सुरक्षा विषय पर पांचवां साप्ताहिक प्रशिक्षण कार्यक्रम का उद्घाटन डॉ. एच.एस. मिनवावर, निदेशक की अध्यक्षता में हुआ। इस अवसर पर निदेशक ने प्रशिक्षणार्थियों को संस्थान

एवं प्रशिक्षण के विषय पर विस्तृत चर्चा की एवं उच्च गुणवत्ता के पाथ के उद्घाटन एवं उस पर आधारित अक्षरोंपरी एवं कृषिवाहिकों के लिए प्रोत्साहित किया और आग्रह किया कि वनों से बाहर वन के लिए सुदृढ़ वनीकरण के लिए उपयोगी कारक जैसे उच्च गुणवत्ता प्रजाति का चयन, प्रजाति के अनुसार बीज का उचित समय पर संग्रहण, आधार रोपणी की थापण और उच्च गुणवत्ता के पाथ का उद्घाटन एवं प्रबंधन, औद्योगिक एवं कृषक की आवश्यकताओं का बहुत थोड़ा खतरा करके वाहिकों प्राप्त की वसुधा देने पर जोर दिया जिसके द्वारा न केवल कृषकों को अतिरिक्त आय प्राप्त हो सकती है बल्कि भूमि की उत्पादकता एवं उपजाऊ क्षमता भी बनाए रखी जा सकती है।

वन विभाग के अधिकारियों को मिली पौधों की जानकारी

(नव स्टूडेंट) । ■ जयलपुर

उष्णकटिबंधीय वन अनुसंधान संस्थान में मुजरात वन विभाग द्वारा प्रबंधित, मुजरात वन विभाग के अधिकारियों एवं कर्मचारियों के लिए उच्च गुणवत्ता वाला उत्पादन एवं कृषिजीवी कीटों द्वारा अर्थव्यक्ति का मुझा विवरण पर पांचवें सांख्यिकी प्रतिभाग कार्यक्रम का उत्पादन है। एच.एस. निम्नलिखित, निदेशक की अध्यक्षता में हुआ। इस अंतराष्ट्रीय प्रतिभाग के प्रतिभागियों को संस्थान एवं प्रतिभाग के विवरण पर विस्तृत चर्चा की उच्च उच्च गुणवत्ता के साथ के उत्पादन एवं उस पर आधारित कुलेश्वर एवं कृषिजीवी कीटों के लिए प्रोत्साहित करने और आगमन किया कि वनों से प्राप्त वन के लिए सुदृढ़ बचकाल के लिए उपयुक्त करक जैसे उच्च गुणवत्ता प्रबंधन का प्रमाण, प्रबंधन के अंतराष्ट्रीय का उचित



समय पर संग्रहण, अदरत रोपन की सुविधा और उच्च गुणवत्ता के पौध का उत्पादन एवं प्रबंधन, औरंगीज एवं कृष्ण की आवश्यकताओं का विशेष ध्यान रखकर कृषि खानिकी प्रत्यक्ष को सहाय्य देने पर जोर दिया जिसके द्वारा न केवल कृष्णों को अतिरिक्त आय प्राप्त हो सकती है बल्कि अन्य उच्च कृषि धर्मों को भी नुकसान नहीं होगा।

को, साथ ही संस्थान द्वारा विकसित उत्कृष्ट अनुसंधान तकनीकों को इस प्रशिक्षण के माध्यम से गुजरात वन विभाग तक पहुँचाने का प्रयत्न भी किया जाएगा।

11 वर्षों में सबसे बड़ा
समाचार

पीपुल्स समाचार

जयपुर
संपादक: श्री. राजेश कुमार
संपादक: श्री. राजेश कुमार

टीएफआरआई में 5 वां साप्ताहिक ट्रेनिंग प्रोग्राम का आयोजन
कृषि वानिकी प्रारूप को बढ़ावा दे
की आवश्यकता : डॉ. एच गिनवा



पञ्चवीर नाटिका अनुसंधान विभाग
द्वारा के अंतर्गत आयोजित कार्यक्रम
आयोजित कर अनुसंधान प्रयोग,
जयपुर (टीकगढ़जाल्) में 5
साप्ताहिक प्रशिक्षण कार्यक्रम का
आरम्भ किया गया। नृत्यारंभ
विभाग द्वारा आयोजित, नृत्यारंभ
कर विभाग के अधिकारियों एवं
कर्मचारियों के लिए
उपयुक्त नृत्यारंभ के लिए
आयोजित एवं कृपि
श्रीमती राजा अतीथिका
द्वारा विभाग पर राजी नृत्यारंभ
प्रकार का उद्घाटन कार्यक्रम का
आयोजन कर टीकगढ़जाल्
आयुक्त के सम्मोचन एवं प्रमुख
विभाग के विभाग द्वारा आयोजित
परिचयन डॉ. विभाग के
प्रशिक्षणार्थी का संयोजन एवं

कार्तिकेय हनुमान मुखात्
 के चैव के उपमान एवं
 उक्त या अत्यन्त
 सुशोभित एवं
 कुचिचरित के निरूप प्रोत्थित
 विधाः उपविष्टा किं औचित्य
 एवं कृष्ण की आत्मवक्तव्य का
 विशेष अन्त राखत कुचि चरित
 प्रमाण को ब्याख्या देने की
 आवश्यकता है।
 डॉ. यशवन्त बेरी, इतिहास
 के आचार्य, श्री आर्य समाज

के बोले में विचार से जागृताई प्रदान की, साथ ही संभवतः इस विचारित प्रकृति अनुसंधान तकनीकी को इस

म उठाने में मिलेजी मदद

साथम से कृषकों को आजीविका में रुढ़ि बनाना भी है। इससे मुजरात बन विधान के अधिकारियों और कमिशनरों को नवीनतम तकनीकी और अनुसंधान के परिणामों का लाभ उठाने में मदद मिलेगी।

[illegible]

TFRI के वैज्ञानिक एमपी, छगब महाराष्ट्र में 18 खदानों पर करेंगे काम
देश के 3 राज्यों में माइनिंग एरिया की
सेहत सुधारेंगे **जबलपुर के एक्सपर्ट्स**

[illegible][illegible]

पैले लेखा काम

पैले लेखा : दुसरी वे ईटाड म्हालाय कि वे मिट्टी किम म्हाला वे पैले वे किम मुकुम म्हाला ।

● पैले वे मुकुम : दुसरी वेड अमलाय वे कोरी वे म्हालाय वे वे म्हालाय वे म्हाला, दुसरी वेड कोरी वे पैले वेड वेड म्हाला, दुसरी वेड मुकुम म्हाला ।

पेने पिन्टिव

● पेने पिन्टिव कोरी वे म्हालाय वेड म्हाला म्हाला : किम म्हाला वे कोरी वेड मिट्टी/मिन्टिव कोरी वे, वे म्हाला वे कोरी वेड, म्हाला वेड, म्हाला वेड कोरी वेड मिन्टिव कोरी वे ।

[illegible]

कृषि वानिकी से किसानों की आय में अवश्य की जा सकती है बढ़ोतरी



जबरापूर @ पञ्चिका कृषि
व्यवसायी से किसानों की आय में
बढ़ोतरी हो सकती है। इसके लिए
अच्छी प्रजातियों का चयन करना
होगा। यह जल उपजकटिबंधी वन
अनुसंधान संस्थान में आयोजित
वर्कशॉप में विशेषज्ञों ने कही। कृषि
व्यवसायी व कृषक आज्ञिकता पर
प्रशिक्षण कार्यक्रम में उत्तराखंड,
हरियाणा, महाराष्ट्र, ओडिशा,
अंडमान, कर्नाटक से भारतीय वन
सेवा के अधिकारी शामिल हुए।
संस्थान निदेशक डॉ. एचएस
मिनक्ल ने संस्थान के इतिहास,

उदरस्थ और धानिकी अन्तर्ग्रन्थानां वै
शेषं ये किंप्रु गुरु सायति के बारे में
ज्ञानकारी दी। मुख्य अस्थि पृष्ठ
प्रधान मुख्य बल संस्था
हरिप्रधान च यत्न बल प्रयुक्त
जगदीश चंद्र ने बताया कि मानव
संस्था के इतिहास के साथ ही कृति
प्रधानिकी का इतिहास जुड़ा है
प्रतिष्ठान की संस्थाजक डॉ. नित्य
वरी ने प्रतिष्ठान के कार्य माहसूल के
बारे में बताया। कार्यक्रम में
अनुसंधान समन्वयक नीलु सिंह, डॉ
संयम विष्णुनाथ सायति अन्त
वैज्ञानिक मौजूद थे।

**समस्या एवं समाधान
विषय पर रखे विचार**

[illegible]



January-March, 2025 VOL:17

Knowledge Bequest of ICFRE-TFRI, Jabalpur

National Insect Repository

- 750 species of insects.
- Recognized by National Biodiversity Authority (NBA) as National Repository



Mycology Herbarium

- 4000 Fungal specimens systematically arranged and documented and 451 species of Fungi identified.
- Forest fungi identification service available



Herbarium

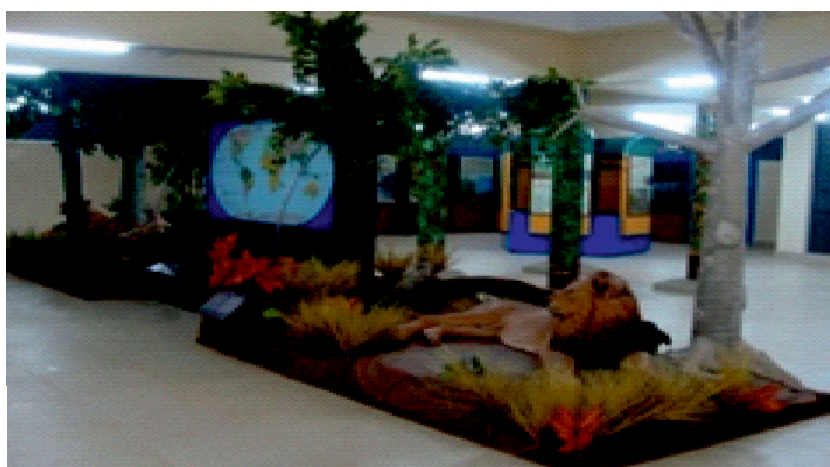
- 800 plant specimens preserved in Herbarium .
- Forest Ecology & Climate Change Division provides services of plant identification on submission of specimens.





January-March, 2025 VOL:17

Museum cum Interpretation Centre



Technical services offered

Institute conduct Internship programmes for student's/stakeholders

Internship Charges

Sl.No.	Training Period	Biotechnology /Molecular Biology		Other Disciplines	
		B.Sc./Undergraduate	M.Sc. Postgraduate	B.Sc./Undergraduate	M.Sc. Postgraduate
1.	One Week	Rs. 1,000=00	Rs. 2,000=00	Rs. 1,000=00	Rs. 2,000=00
2.	Fifteen days	Rs. 2,000=00	Rs. 4,000=00	Rs. 1,500=00	Rs. 3,000=00
3.	One Month	Rs. 3,000=00	Rs. 8,000=00	Rs. 3,000=00	Rs. 5,000=00
4.	Two Months	Rs. 5,000=00	Rs. 11,000=00	Rs. 5,000=00	Rs. 7,000=00
5.	Three Months	Rs. 28,000=00	Rs. 16,000=00	Rs. 7,000=00	Rs. 11,000=00
6.	Above three months to six months	Rs. 12,000=00	Rs. 22,000=00	Rs. 9,000=00	Rs. 16,000=00





January-March, 2025 VOL:17

Testing facilities available at ICFRE – TFRI, Jabalpur

S1. No	Parameter	Price in Rs.
1.	pH	100/- per sample
2.	EC	100/-per sample
3.	Organic Carbon (OC) /Organic Matter	100/-per sample
4.	Major nutrients (N, P, K, Ca, Mg, Na)	300/- each and 1500/- package
5.	Micronutrient (Mg, Ni, Zn, Fe, Co, Cr, Cu, Mn, B)	300/- each and 2000/- package
6.	Texture analysis	500/-per sample
7.	Bulk Density	150/-per sample
8.	Total soil Analysis (1 to 7)	4000/-per sample
9.	Dry matter / Moisture percentage	100/-per sample
10.	Plant testing – N, P, K, Ca, Mg, Na	250/- element and 1300 / -for all
11.	Plant identification charges	250/- specimen
12.	Bio- control agent -egg parasitoid card (25000 eggs /card)	300/- card
13.	Laboratory testing of pesticide (biopesticide / insecticide) against	20,000/- per defoliator
14.	insect defoliator/ white grub	40,000/- per white grub
15.	Field testing of insecticides against termites and insect defoliators	1,00,000/-
16.	Identification services for decay fungi/mould	1000/ species
17.	Identification of fungal specimen and its matching with herbarium	250/-per sample
18.	Micro photography of fungi	100/-per sample
19.	Seed germination and viability test	500/ - per sample
20.	Seed purity tests	400/ - per sample
21.	Moisture content of seeds	200/ - per sample
22.	Determination of phenols (if standards available)	600/ - per sample
23.	Determination of tannins (if standards available)	600/ - per sample
24.	Determination of carbohydrates (if standards available)	600/ - per sample
25.	Determination of starch (if standards available)	600/ - per sample
26.	Determination of chlorogenic acid (if standards available)	600/ - per sample
27.	Determination of Protein (if standards available)	600/ - per sample
28.	Chemo profiling of medicinal plants with the help of HPTLC	2000/- for the first sample & 500/ - per subsequent sample of the same sp.
29.	Leaf area Measurement	200/- per sample
30.	Estimation of a single marker constituent in plant extract	5500/ - per sample for Academia / R &D, 10000/ - per sample for Industry
31.	Ash Content	610/-per sample for Academia , 1100 / per sample for Industry
32.	Microscopic analysis	500/- per sample
33.	Genetic Fidelity testing	10,000/- per sample (Minimum 10 samples)





January-March, 2025 VOL:17

Plants Available for Sale at Silviculture, Forest Management Division, TFRI, Jabalpur

S. No.	Species	Number of Plants Available
1.	<i>Tinospora cordifolia</i> (Giloy)	100
2.	<i>Aegle marmelos</i> (Bel)	540
3.	<i>Cymbopogon citratus</i> (Lemon grass)	100
4.	<i>Oroxylum indium</i> (Shyonak)	50
5.	<i>Mimusop selengi</i> (Moulshri)	260
6.	<i>Asparagus racemosus</i> (Satawar)	100
7.	<i>Artemisia annua</i> (Davana)	30
8.	<i>Phyllanthus emblica</i>	25
9.	<i>Terminalia arjuna</i>	30
10.	<i>Moringa oleifera</i> L	1850
11.	Bamboo	600
12.	<i>Delonix regia</i>	3000
13.	<i>Cassia fistula</i>	1000
14.	<i>Pongamia pinnata</i>	550
15.	<i>Tamarindus indica</i>	820
16.	<i>Albizia lebbeck</i>	5000
17.	<i>Syzygium cumini</i>	540
18.	<i>Terminalia bellirica</i>	720
19.	Other Species	As per availability

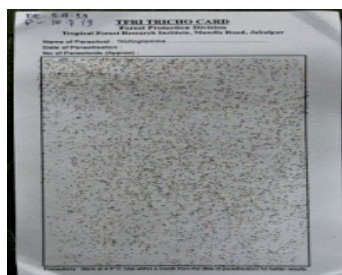


Medicinal/trees species Plants- Rs. 30/- plant

- Prices and number may be varied as per the availability and season

TFRI TRICHO-Card

- TFRI-TRICHOCARD developed using the parasitoid, *Trichogramma raoi*.
- It's an Ecofriendly bio-control method for managing teak defoliator & skeltonizer.
- 4 cards required for a hectare area **cards available @ Rs. 500/- per card**





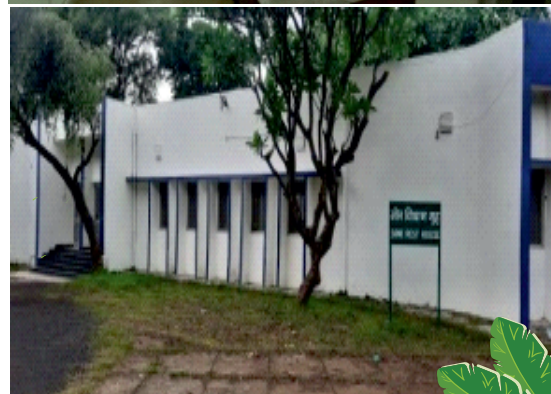
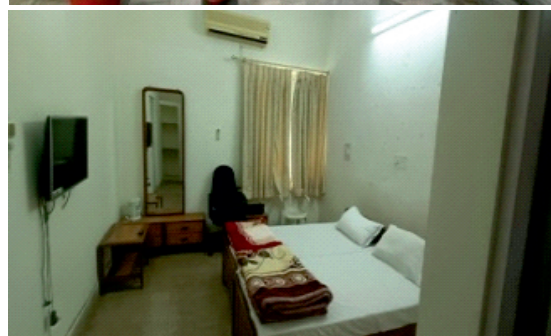
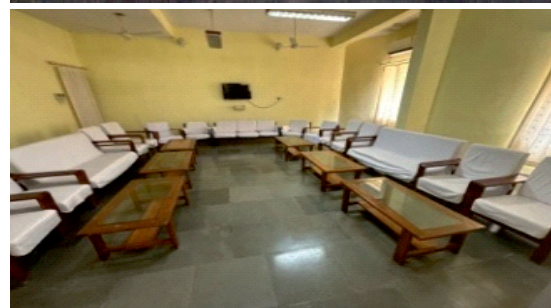
January-March, 2025 VOL:17

Guest House facilities and Charges

S.No.	Category of Person	Rent per day while on Govt. Duty (Rs.)		Rent per day while not on Govt. Duty (Rs.)	
		Rooms	Suits	Room	Suit
1.	a) Officials of ICFRE and institutes b) Consultants and research Fellow at ICFRE and its institutes and FRI Deemed Universities c) Officials and experts of MoEF&CC, New Delhi d) Officials of SFDs e) Ex- employees of ICFRE and Ex-Deputationist	150	200	200	300
2.	Family members of present /ex -employees a) ICFRE Employees b) ICFRE Deputationist			200	500
3.	a) Officials of Autonomous bodies, Universities under the FRI Deemed University b) Officials of Central/State Government other than SFDs	200	300	400	300
4.	Others (Non Governmental)			600	750

Maintenance charges in addition to above rent will be applicable as follows:

Accommodation type	Maintenance charge including A/C, Heater Charges
Room	Rs. 200/-per day
Suit	Rs. 250/- per day





ICFRE - TFRI NEWSLETTER



January-March, 2025 VOL:17

Patron

Dr. H. S. Ginwal
Director
ICFRE-TFRI, Jabalpur

Editor-in-Chief

Smt. Neelu Singh
Scientist –G, Group Co-ordinator (Research)
ICFRE-TFRI, Jabalpur

Editors

Dr. Jangam Deepika
Scientist –C, FE&CC Division, ICFRE-TFRI,
Jabalpur

Dr. Kaushal Tripathi
Scientist –C, GTI Division, ICFRE-TFRI,
Jabalpur

Shri Ajit Kumar Maurya
Scientist –B, SFM&AF Division, ICFRE-TFRI,
Jabalpur

Technical support

Shri. H. L. Asati
Senior Technical Officer, ICFRE-TFRI, Jabalpur

Smt. Nikita Rai
Sr. Technician, ICFRE-TFRI, Jabalpur

Shri. Ravi kant
LDC, ICFRE-TFRI, Jabalpur

For further information contact

GROUP COORDINATOR RESEARCH

ICFRE - TROPICAL FOREST RESEARCH INSTITUTE

(Indian Council of Forestry Research & Education)

P.O.:R.F.R.C., Mandla Road, Jabalpur - 482021, Madhya Pradesh

Phone No: - + 91-761-2840010(O) Fax :- + 91-761-2840484

Group Coordinator (Research) Phone :0761 -2840003

Website :- <http://tfri.icfre.gov.in>; Email: - dir_tfri@icfre.org, groupco_tfri@icfre.org





January-March, 2025 VOL:17

ABOUT THE INSTITUTE

- ICFRE-Tropical Forest Research Institute, Jabalpur (Madhya Pradesh) came into existence in April 1988, to provide strong research support to sustainable development of forest and forestry sectors in Central India comprising the states of Madhya Pradesh, Chhattisgarh and Maharashtra.
- It is one of the nine regional institutes under the Indian Council of Forestry Research & Education, Dehradun (Uttarakhand).
- ICFRE-Skill Development Center, Chhindwara, came into existence on 30th March 1995. It was declared on 3rd January 1996, a satellite Centre of ICFRE-Tropical Forest Research Institute, Jabalpur.



Core Research Areas

- ❖ Eco-restoration of Vindhyan, Satpura and Maikal hills and Western Ghats, Rehabilitation of mined areas.
- ❖ Development and Demonstration of Agroforestry Models
- ❖ Forest Protection
- ❖ Biofertilizers and Biopesticides
- ❖ Non-Wood Forest Products
- ❖ Biodiversity Assessment, Conservation and Development
- ❖ Sustainable Forest Management
- ❖ Planting Stock Improvement
- ❖ Climate Change & Environment Amelioration
- ❖ Forest Products Development

